

Winchester (NZ) Ltd

is proud to support Ducks Unlimited (NZ) Inc.
in their efforts to propagate and preserve
New Zealand's rare waterfowl.



Grey Duck



DUCKS UNLIMITED (N.Z) INC.,
— FOR WATERFOWL AND WETLANDS —
PO BOX 44-176 LOWER HUTT, NEW ZEALAND



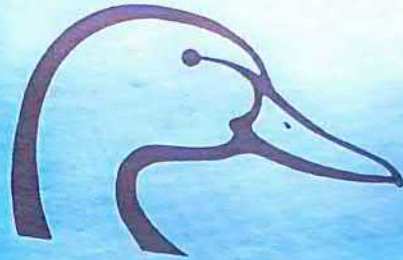
WINCHESTER[®]

MORE THAN A NAME. A LEGEND.

Distributed in New Zealand By: Winchester New Zealand

No. 3/87 • ISSUE 53 • SEPTEMBER 1987
NEW ZEALAND REGISTERED MAGAZINE

DUCKS UNLIMITED
QUARTERLY
WATERFOWL JOURNAL



Flight



DUCKS UNLIMITED (N.Z) INC., — FOR WATERFOWL AND WETLANDS — PO BOX 44-176 LOWER HUTT, NEW ZEALAND

BOARD OF DIRECTORS AND OFFICIALS FOR 1986-87

PRESIDENT
J.C. Campbell, 'Rameslie', RD1, MASTERTON.

VICE-PRESIDENT
Brendan Coe, P.O. Box 44-176, LOWER HUTT.

SECRETARY
F.N. Hayes, 17 Wise Street, WAINUIOMATA.

TREASURER
C.W. Hooson, P.O. Box 10289, WELLINGTON.

BOARD MEMBERS
A.K.M. Elliott, 'Rawhiti' R.D.4 PAHIATUA
Ms D. Pritt, Smiths Road, OHAKUNE.
B. Coe, P.O. Box 44-176, LOWER HUTT.
J. Glover, Hill Road, PAUTAHANUI.
Mrs G. Hansen, 'Tidsfordriv', R.D.3, EKETAHUNA.
G. Girvan, 77 Waipapa Road, Hataitai, WELLINGTON.
A. Tannock, P.O. Box 1202, PALMERSTON NORTH.
M. Newcomb, P.O. Box 1834, AUCKLAND.
D. Morrison, R.D.1 OTAKI.

OTHER OFFICIALS

Membership Secretary
Brendan Coe
'Flight' Editor
Gary Girvan
Chapter Liaison Officer
Derek Morrison, Waitohu Valley Rd, R.D.1 OTAKI

HONORARY VETERINARY ADVISER:
J. O. Gill, B.V.Sc., ROTORUA.

HONORARY WILDLIFE ADVISER:
Ralph Adams, UPPER HUTT.

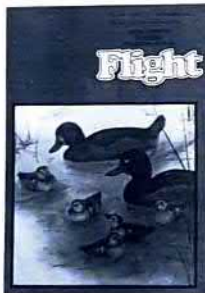
HONORARY LEGAL ADVISER:
Don McCulloch, UPPER HUTT.

HONORARY MEMBERS
K. Barnett, TOKAANU
H. A. Sinclair, MBE, DUNEDIN
K. G. W. Wilkinson, WELLINGTON

Adrienne Longuet, WELLINGTON
R. T. Adams, UPPER HUTT
Lady Diana Isaac, CHRISTCHURCH
A. Flexman, POKENO
L. Piper, CHRISTCHURCH

LIFE MEMBERS

W. Barrett, AUSTRALIA.
N. C. Cameron, FEATHERSTON.
P. M. McLeod, CHRISTCHURCH.
I. H. Pirani, ROTORUA.
Mrs D. G. Pirani, ROTORUA.
J. H. B. Ward, HUNTLY.
M. J. Bourke, KIMBOLTON.
Ava Zaubernen, AUCKLAND.
Isaac Wildlife Trust, CHRISTCHURCH.
F. S. S. Bailey, AUCKLAND.
N. Marsh, TAUPU.
Dr T. Reiger, U.S.A.
Dr M. L. Hucks, TAUPU.
J. Campbell, MASTERTON.
Mrs C. L. Pirani, AUCKLAND.
K. Lowry, AUSTRALIA.
R. M. Eberhardt, U.S.A.
M. White, DUNEDIN.
A. A. Gurney, UPPER HUTT.
Central North Island Wildlife Conservancy Council, ROTORUA.
M. R. Grace, HUNTERVILLE.
Mrs M. C. Davison, WYNDHAM
Glenys Hansen, EKETAHUNA
Gaylord Donnelly, U.S.A.
William D. Wright, U.S.A.
Mr & Mrs P. D. Nolan, U.S.A.



Cover picture: a detail from the fine painting of New Zealand scaup by Janet Marshall. This painting is first prize in this year's DU raffle.

Ducks Unlimited (NZ) Incorporated is a private, non-profit membership organisation dedicated to the preservation, restoration, creation and maintenance of wetlands habitat in New Zealand and to the propagation of the country's rare waterfowl as a valuable natural resource. The organisation was founded in May 1974 by a group of far-sighted conservationists and incorporated by them in June 1975 at Wellington, New Zealand. The national headquarters mailing address is PO Box 44-176, Lower Hutt. "Flight" is the official quarterly publication of Ducks Unlimited (NZ) Incorporated reaching 2000 devoted members and friends concerned with waterfowl conservation. DU memberships begin at \$5.50 per Janitor to \$16.50 for full membership with provision for trade and life members. Membership of Ducks Unlimited carries with it subscription to this publication. To assure prompt delivery, members who move are urged to forward their new address along with current membership details to national headquarters. Letters and contributed manuscripts and photographs should be addressed to the "Flight" Editor. Views expressed by contributors are their own and do not necessarily constitute those of Ducks Unlimited (NZ) Incorporated.

IN THIS ISSUE

President's Report	3
Threat to Brown Teal	4
Rearing Waterfowl	6
AGM Report	8
DU News	12
Project Reports	16
Financial Report	18

PRESIDENT'S REPORT

Since returning from Canada and U.S.A. my confidence in the ability of Ducks Unlimited NZ to gain rapid momentum has been reinforced greatly by the support we have received from many organisations for the Sinclair Wetlands. Recently an anonymous donor offered to take up the expenses on the recently leased adjacent areas for the first five years.

We thank him most sincerely for this support which will enable us to achieve so much more in this very important area.

The Queen Elizabeth National Trust has recently contributed \$50,000 to the building project and this has enabled the board to approve completion of the entire structure within the next month or so. We have a very energetic team in Otago and special thanks are due to Horrie Sinclair and Bill McLay for their enthusiasm within that area.

Dr Phillip Tortell from the Department of Conservation enthused all members present at the A.G.M. with his address and rundown on the new Department and the promise of support for DU which we vitally need if we are to continue retaining and improving wetland habitat.

To be present at the 50th Conference of DU U.S.A. in Vancouver had to inspire my enthusiasm, especially having dined at the final banquet in the company of Mr and Mrs Gaylord Donnelly and Pat and Stew Morrison (Alias Top Duck) in Canada. The tremendous strength within the total DU scene at an event such as we attended had to be seen to be believed. The few brief moments I had to talk with Hazard Campbell and Peter Coors, or Arthur Irving and Dr Eric Gustofson all inspired enthusiasm for the cause. One man familiar to our members here received several standing ovations during the conference, an honour and tribute to Dale Whitesell on his retirement from Executive Vice Presidency. Dale obviously has done so much for waterfowl during his term and has always supported DU NZ any way possible.

The teams at both DU Inc. in Chicago and DU Canada in Winnipeg gave Lyn and myself so much support during the Conference and later whilst on tour. We regret that Chicago headquarters were just out of reach this trip, but we were certainly well hosted by the teams from Edmonton and Winnipeg.

On tour with Geoff and Paulette Forsyth we experienced in three days temperatures at Lake Lottie north of Edmonton suitable for lake swimming, to 8 cm of snow and blizzard conditions on return, a massive contrast.

On the final day of the conference, I gave a brief resume of DU NZ and described some of our projects. To stand and address some 1400 people and follow a "Marshwalker", video on Dumac's progress, and a very impressive slide presentation from DU Canada, along with DU U.S.A. took the utmost of confidence. However I was later told that my accent was enough to see me through and later that evening we had promised, 4 life memberships to DU NZ, with more added since our return.

The highlight of the conference for many was the cruise up the north west passage on board "The Princess Margurite" hosted by G.M.C. trucks. There were five live bands on board for the afternoon, unlimited food and

refreshments, a show advertising the G.M.C. Camoduck truck and on return to harbour in the evening, a massive fireworks display from another ship. We will never forget that afternoon and evening or the welcome back to shore from Donald Duck (Alias John Berry). Donald has been part of DU Canada's promotion recently and certainly catches attention walking down the street. A tribute to the few stalwarts from Edmonton who sweated within that costume. I wonder which chapter within NZ will produce a similar entity for some of our events.



Wildlife artist Janet Marshall, working in the grounds of her Stratford property. A detail of her painting commissioned by DU as first prize in the annual raffle appears on the cover of this issue. Most New Zealanders will have seen her work as her portraits of such native birds as the blue duck and the brown teal feature on the current postage stamp issue. Janet and Graham Marshall, who have been DU members since 1974, "farm" large numbers of native birds on their 35 acres.

The auction after the banquet was rather awe inspiring with most items starting at over \$1000. A set of limited edition Remington Commemorative firearms was in excess of \$28,000. My ability to bid was rather stifled when the currency differential was taken into consideration.

An interesting wetlands tour to Mirekaha-da Marsh and Riefel Bird Sanctuary completed a most interesting and enjoyable conference. Reluctantly leaving Vancouver, we toured through the Rockies to spend three days at Rafter Six guest Ranch at Cee Bee and one evening inspected a wetland whilst trailriding on horseback. On arrival at Winnipeg we were hosted by Ritta and Herb Moulding, the couple who toured New Zealand last summer and offer much advice to DU NZ. Herb took me touring for two days, viewing control structures at wetlands around the Brandon area. An interesting afternoon was spent with Cal Cuthbert a biologist working from Brandon office. Cal was an expert on bird identification and showed us many of their species.

I can see a very worthwhile reciprocal agreement between our fellow organisations with a view to hosting and learning by swapping biologists or other keen members or maybe hosting one of their top fund raisers for a period in NZ and assessing their expertise in that field.

Ritta and Herb treated us to many interesting excursions and we recommend a bicycle tour of Winnipeg Kings Park anytime. To see 15 canvas-back drakes and a striped squirrel in one afternoon, along with fresh beaver workings in a wetland is very rewarding.

A 2 hour overview of the dozen Winnipeg wetlands from a Cessna aircraft along with "Phil" manager for that area really gave a proper perspective to the vast areas DU are working on. Oak Hammock Marsh was impressive from the ground but from above a massive area in which islands have been constructed throughout. We flew over the Delta research area, centre for the conference. Grant Dumbell has recently represented DU NZ there, a further valuable contact with our close DU friends.

To cap our stay in Winnipeg, Stew and Chris Morrison took us fishing on Cone Lake and treated us to a ride into their wilderness area where we saw muskrat, herons and turtles.

We are indebted to all those who generously hosted us on tour and can only hope we get the chance to reciprocate in the near future. Meanwhile we are organising a tour to the Canada 50th celebrations next June. Details will appear shortly. So let's get a sizeable team to represent NZ at this milestone event.

Jim C. Campbell





The brown teal is adept at camouflage.

LAND GRAB ANOTHER THREAT TO RARE DUCK

The following article and photograph appeared in the 'Bay of Plenty Times' and is represented here with their kind permission.

By Ann Graeme

SHOOTING, predation, swamp drainage and forest clearance have together decimated the population of the NZ brown teal. The latest actor in this tragedy may well be the new Land Corporation.

The story of the brown teal is typical of many of our dwindling native species.

Brown teal are very sociable ducks, spending a lot of time in large flocks at traditional sites, where they meet and bond with their mates.

This social habit has contributed to their downfall as the destruction of a single traditional site means the disruption and decline of an entire population.

Brown teal live in boggy wetlands, near streams or lagoons or estuaries. They feed at night, dabbling and probing the mud for worms and crustaceans, catching insects and snails amongst the rushes, and nibbling roots and leafy shoots. Hedges or long grass

conceal their nests in which the small clutches of between 4 and 8 eggs are laid.

The brown teal or pateke is endemic, meaning it is not found anywhere else in the world. Last century brown teal were widespread throughout NZ, and were commonly shot for food and sport.

Unnoticed and unrecorded the species declined, presumably from a combination of shooting, predation by introduced cats, rats and mustelids, and the loss of their habitat through the drainage of wetlands for pasture.

By 1983 the brown teal population was estimated at less than 1500 birds, found only in North Auckland and Great Barrier Island. The larger population of about 1200 birds on Great Barrier Island appears to be stable, but the Northland groups are small and vulnerable.

For 10 years now these mainland populations have been supplemented by liberating captive birds reared by the conservation organisation, Ducks Unlimited.

Now the brown teal face another threat. A large population on Great Barrier Island live

in the Whangapoua wetland on the Crown-owned Okiwi Station. Last month a large part of the wetland was allocated to the new Land Corporation to graze cattle in the summer when the rest of the station's pasture is dried out.

Land Corporation is not a conservation organisation, it is a profit-oriented State corporation. The needs of the brown teal flock, to roost and feed and nest in their wetland must directly conflict with the needs of the hungry cattle mobs during summer droughts, and once again the ducks will be the losers.

All of this important wetland must be allocated to the Department of Conservation, so that the wetland can be protected, and it can remain always in public ownership.

All over New Zealand the rush is on to give public land to the new corporations. Many of the allocations are ill-conceived and lacking in foresight.

In the years to come both the NZ public and the brown teal of Great Barrier Island may regret that our public land was so lightly given away.

ROVER[®] dog biscuits



AVAILABLE IN
10kg, 20kg, 30kg
& 45kg SIZES

— complete a dog's diet



ROVER PRODUCTS LTD PO BOX 64 OTAKI



REARING WATERFOWL

Bill Clinton-Baker is a well-known waterfowl breeder and one of DU's most successful brown teal breeders. In this article, Bill reveals some of the secrets of his successful rearing techniques.

by Bill Clinton-Baker

There are two methods of rearing waterfowl: using an electric incubator and then a brooder, or by using bantams as foster mothers. While the former method may be more suitable for someone with limited space, the cost of equipment can be considerable and there is always the risk of mechanical breakdown or power failure. The use of bantams is relatively foolproof, though a small automatic incubator can be an invaluable backup.

Obviously the first essential is a supply of reliable broody bantams; reliable being the key word. Over the years a strain has been developed which are steady though 'aggressively broody'. A reliable bantam when one tries to lift her off her eggs should ruffle her feathers and peck the hell out of you! If she flies off the nest-wring her neck.

It pays to run quite a few bantams so as to have one available when duck eggs are ready, but they are at the same time a source of eggs for the kitchen and fun characters to have around.

The bantam should incubate the duck eggs either in a hen coop with a detachable run or in a sitting box in a shed. The eggs should be either in a hollow in the ground or in an inverted turf. Wood shavings or fine hay make a good nest lining. Half a cup of warm water should be poured in the earth every few days. This is important, as it takes the place of the natural humidity the eggs would get from the wet breast of the duck returning to its nest.

It is advisable to test the eggs after about a week. A simple tester can be made by having an electric globe inside a cardboard box with varying holes cut in the four sides for different sized eggs. After a week the dark shadow of the developing embryo can be seen and after a few more days the whole egg becomes opaque with a clear air cell at the large end. If an egg remains clear it is infertile and it is a waste of time to continue incubation.

Incubation periods vary between breeds. Mallard, Greyduck, Scaup take 28 days, the Teals 26, Shoveler 24, while Carolina take 31 days to hatch.

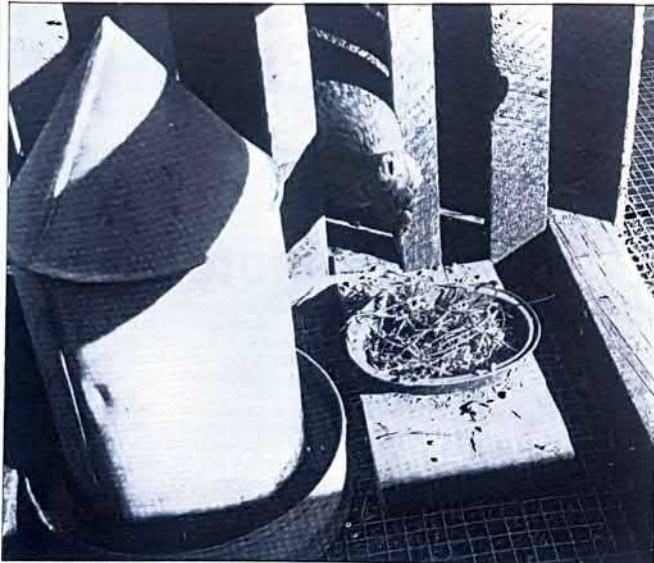
Reliable bantams should have food & water available and be allowed to come off the nest at will to feed and defecate.

When eggs are hatching the golden rule is to leave well alone, but this is hard to do! A careful feel under the bantam will tell what stage has been reached. Ducklings should never be moved until properly dried off and remember that they do not start to feed for 48 hours after hatching, so don't panic. When dried off the bantam and ducklings can be moved to the rearing run. This has a built-in coop with slatted front in which the bantam is retained, reaching through the slats for food and water, but through which the ducklings can run out into the pen for their food

which is out of reach for the bantam. The floor of the pen and coop is covered with 12mm welded mesh which makes the pen completely vermin proof and easy to move without injury to the ducklings.



The rearing run.



A detail of the rearing run showing the bantam's coop with feeding and drinking arrangements.

FEEDING

A flat plate is put just out of reach of the bantam with the bottom only just covered with water. A few pinches of turkey crumbles are then scattered on the water. At this stage this is the only water available to the ducklings and as they dabble in it they take some of the food. Let the bantam have water in a jam jar, too high for the ducklings — she is fed wheat



Bill Clinton-Baker displays one of his bantams.

which the ducklings do not touch.

Once they have started to feed, then switch to moist turkey crumbles put inside the 'nail feeder' — this is easy to make and prevents ducklings treading in their food. At the same time a drinking fountain is introduced and used by both bantam and ducklings.

IMPORTANT

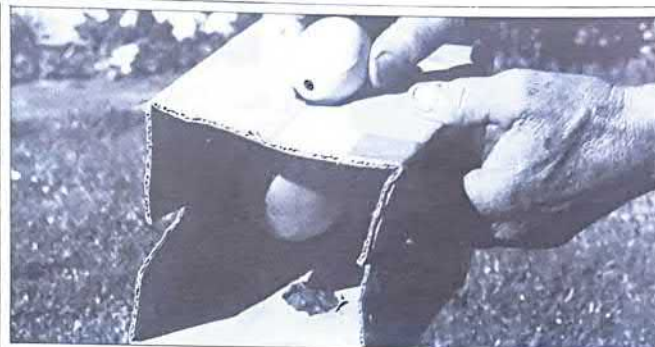
Remember that ducklings reared by a bantam should not be allowed to go on water. They have not got the natural oily waterproofing from the duck.

After about three weeks, the diet can be gradually changed to dry poultry pellets and then to a mixture of pellets and wheat. It is useful to get them used to wheat if this is to be fed in the pond. The bantam can be removed as soon as the first few feathers appear on the ducklings, though this is also governed by the weather. As soon as they are half feathered they can be moved to a larger run with water for swimming.

Pinioning can be done when the ducklings are moved from the sitting box to the rearing run. It has no adverse effect on them at this age, though at about ten days old it may be easier to see the wing joint.

Much easier to get someone to hold the duckling for you. Extend one wing only and with sharp scissors cut the wing at the 'elbow'. This is a full pinion and when the bird tries to fly, will 'cartwheel'. If the cut is made nearer the wingtip the duck can partly fly but not lift far off the water and this has the advantage that the bird is less vulnerable to predators.

Waterfowl eggs can be incubated entirely under bantams as described or left for a period under the duck. The main disadvantage of the latter is that when on her nest she is at greatest risk from predators. Moreover, if eggs are taken early during incubation the chances are that the duck will nest again.



Bill's simple but effective egg tester.

4TH DU NATIONAL CLAY TARGET CHAMPIONSHIPS A GREAT SUCCESS

The fourth DU annual clay target champs were held at the Taupo Gun Club on Friday 10th July — the day before the annual conference.

Once again a full compliment of 60 shooters were present, including John Woolley the Commonwealth Games double-gold medalist. John was one of a number of prominent day target shooters present, in fact the DU shoot has now become a major event. John Coatham ran the shoot and performed miracles, at very short notice.

Top shooters were as follows:

SKEET:	HOA 1st A 1st B&C	John Woolley (Auckland) John Bennett (Morrisville) Greg Nicol (Cambridge)
SPORTING:	HOA 1st A 1st B&C	John Bennett (Morrisville) John Woolley (Auckland) Arthur Hewitt (Auckland)
SPARROWS:	HOA 1st A 1st B&C	Alan Hughes (Hawera) Robert Nixon (Auckland) Steve Knibb (Auckland)
DOUBLE RISE:	HOA 1st A 1st B&C	Murray Havill (Te Puke) Gordon McPhee (Marton) Gordon Parker (Auckland)
SINGLE BARREL:	HOA 1st A 1st B&C	Gordon McPhee (Marton) Alan Hughes (Hawera) Sue Marden (Tokoroa)
POINTS SCORE:	HOA 1st A 1st B&C	John McMillan (Auckland) Alan Hughes (Hawera) Ron Baskett (Murupara)
SINGLE RISE:	HOA 1st A 1st B&C	John Coatham (Putaruru) John Woolley (Auckland) Gordon Parker (Auckland)
HIGH GUN:	HOA A Grade B Grade	John Woolley (Auckland) Alan Hughes (Hawera) Gordon Parker (Auckland)

NZ TEAM: J Coatham, J Woolley, P Vincent, J Bennett, M Pratt, A Ebbett, M Havill, J Elliot-Forster, L Clarke, R Hickey

Score: 1443/1500

Targets Donated by: Reloaders Supplies

CHAPTER TEAM — Waikato: P Vincent, J Bennett, M Pratt, R Hickey, R Mikkelsen

13th ANNUAL CONFERENCE

THC WAIRAKEI 11th JULY, 1987

THC Wairakei was, for the second year, the venue for DU's 13th AGM, Conference, and fundraising dinner. As usual, members and their families came from as far afield as Northland and Dunedin to support this most important event in DU's year. Wairakei has proved to be a very successful venue, being large enough to accommodate the numbers attending and having the added attraction of providing excellent facilities for families and young people. So good has been the response, that at their August meeting Directors determined that Wairakei should be the venue for the 1988 Conference.

CONFERENCE

Formal minutes of the AGM and Conference will appear in the next issue of *Flight*, but some highlights are worthy of mention at this stage.

Guest speaker, Dr Phillip Tortell, Director of Protected Ecosystems, Department of Conservation, delivered an interesting address on 'The Department of Conservation and its role in rare waterfowl management', a subject dear to DU's heart. Most encouraging was the support for DU and its objectives which was evident through his speech. The evidence is there for a most valuable collaboration between DU and the new Department of Conservation.

Life member, Lady Diana Issac, had travelled from Christchurch to attend the conference and her being awarded the Bill Barrett Trophy was a fitting tribute to the work of the Isaac Wildlife Trust and its support of DU especially in the Royal Swan project. Lady Diana was able to announce details of the Open Day at Peacock Springs to be held this October, proceeds to be donated to DU. Further details of this most generous gesture are given in DU News.

DINNER AND AUCTION

Without doubt, the highlight of DU's social and financial year is the annual fundraising dinner and auction. THC Wairakei was able

President Jim Campbell presents Lady Diana Issac with the Bill Barrett Trophy.



to accommodate the 150 diners in great comfort and provided a memorable smorgasbord dinner.

The auction items, unfortunately, were somewhat depleted. The previous night, the vehicles of two Directors were broken into and some of the desirable auction items President Jim Campbell had brought back from Canada, as well as the bulk of the DU sales items were stolen. Prompt action by the police resulted in the thieves being caught (at the cost of two police officers requiring hospital treatment), but the goods were not recovered and the auction had to proceed without them. Despite the disaster of the loss of these items which were expected to prompt spirited bidding, there were many attractive items on display, some of the most sought after being those donated by DU (Inc) U.S.A. who showed their generous support for their down-under affiliates. Their items ranged from waterfowl prints, carved decoys and the like, to many commemorative articles celebrating their 50th anniversary. Auctioneer Bill Wilkinson showed his talent in entertaining the audience while persuading them to bid high for the items. It is a tribute to his skill and to the generosity of members that Treasurer Chris Hoosen was able to bank in excess of \$25,000 as a result of the evening.



Dr Phillip Tortell addresses the Conference.



Auctioneer Bill Wilkinson in full cry.

This evening is the occasion on which Chapters announce the results of their fundraising efforts for the year. The dynamic Eketahuna Chapter, led by Director Glenys Hansen came in with the magnificent sum of \$4,000. Although small in numbers, Eketahuna clearly leads the way in its enthusiasm. Wellington Chapter's successful fundraising dinner lead to a contribution of \$2800 being presented. John Coatham, organiser of the annual claybird championship (held this year at the Taupo Gun Club), presented a cheque for \$800 on behalf of the Central Plateau Chapter. Other Chapters which have lapsed somewhat this year, pricked by the example set by our smallest Chapter, have vowed to respond to the challenge set by Eketahuna.

The smooth running of the weekend was in large part due to the efforts of Director Diane Pritt who, once again, was in charge of registration, accommodation, and the all-important cashing-up at the end of the evening. Special thanks are due to her and her willing band of helpers.

DU directors wish to thank all those individual, organisations and companies list-

ed below for their generous donations to the auction and apologise to any whose names are inadvertently not recorded, especially those who donated items at the last minute without having their names recorded:

L. Drainville, H. Sinclair, Du Canada, Du (Inc) USA, B. Coe, A. Graeme, Anneke Borren, A. Earnshaw, N. Hayes, G. & T. Hansen, Chris & Colleen Hansen, J. Hill, M. & N. Pearce, T. & L. Campbell, Halcyon Press, A. Tannock, D. & A. Pritt, J. Glover, Winchester, O. Mapp, D. & A. Wilks, P. Scully, M. Bourke, C. Walden, J. Cook, T. & S. Harrington, G. Girvan, L.S. Campbell, P. McLeod, Hooson Industries, R. Munroe, J. Campbell, C. Morrison, T. Caithness, Mr & Mrs M. Newcomb, Kilwell Sports Ltd, Hangup Gallery, B. & L. Gwynn, N. Young, T. Nooyen, Rover Dog Products, D. Eley, Mrs C.P. Sigvertsen, Reikorangi Potteries, King & Henry Ltd, Newcombe's Garden centre, Hedley's Bookshop, S. Hayes, Tisdalis, H. & B. Avery, P. & C. Pirani, P. Noon, M. & S. Perry, Broadhead Jewellers, M. & S. Timms, P. McLeod.

RELOADERS SUPPLIES LTD

No. 1 IN N.Z. FOR ALL YOUR SPORTING SUPPLIES

WRITE TO PO BOX 13-010 ONEHUNGA OR TEL (09) 665 407 FOR FREE PRICE LIST

ROD & RIFLE MAGAZINE

New Zealand's Premier Sporting Publication
Upland gamebird hunting.
Wildfowling. Big game hunting. Seafishing.
Trout angling.

GUARANTEE YOUR COPY

Please send me one year's subscription to Rod and Rifle magazine. (6 issues)

I enclose my cheque/ money order for \$16.50

Name:

Address:

Post to:
Rod & Rifle Magazine
PO Box 38-138
PETONE

SINCLAIR WETLANDS FUND RAISING APPEAL

Shown is the progress to date on the Sinclair Wetlands building complex. At its August Board meeting D.U. Directors decided that the complete building should be erected in one go, rather than in two stages — as had been planned earlier. Unfortunately we are still some \$50,000 short of funds to complete the whole complex. Approaches have been made to a number of organisations for financial assistance, but it does seem that D.U. will need to take out a mortgage or loan and we are again asking all members — and

all readers of Flight — to consider the form below and send a contribution to the Sinclair Wetlands Fund Raising Appeal. As mentioned in our earlier reports on activities at the Sinclair Wetlands, the building complex includes visitors accommodation and we see the whole complex as eventually being one of New Zealand's major environmental attractions. And it will be financially self supporting.

Thank you in anticipation of your support.



SINCLAIR WETLANDS BUILDING FUND

A CONTRIBUTION OF \$..... IS ENCLOSED, OR CHARGE TO MY
VISA/BANKCARD/DINERS/AMEX (Delete to suit)

CARD No EXPIRY DATE

SIGNATURE

NAME

ADDRESS

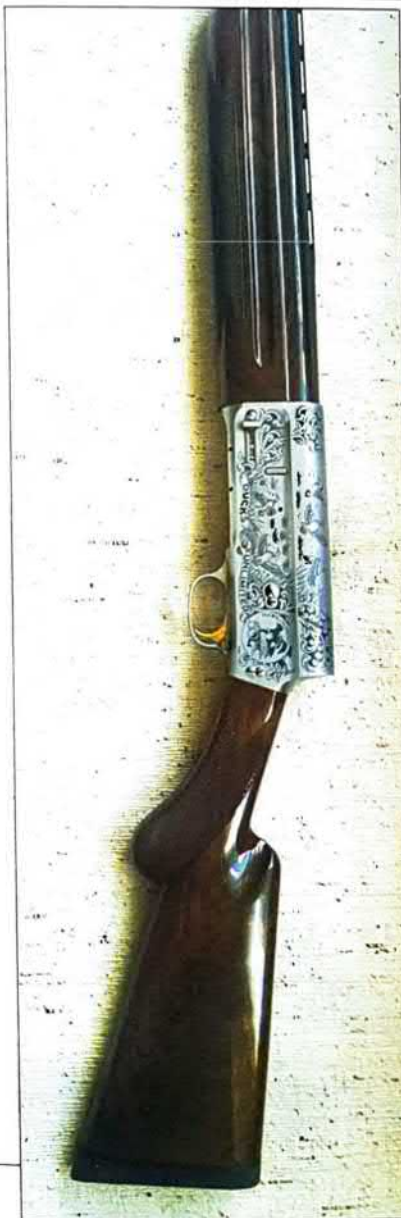
Mail with
your
contribution
TO:

Ducks Unlimited (N.Z.) Inc.
P.O. Box 44-176
Lower Hutt N.Z.

ALL CONTRIBUTIONS TO DUCKS UNLIMITED
ARE DEDUCTIBLE FOR INCOME TAX PURPOSES

Ducks Unlimited (N.Z.) Inc WATERFOWL HABITAT FUND-RAISING CAMPAIGN DU COMMEMORATIVE LIMITED EDITION SHOTGUN

For sale by tender



**Ducks Unlimited (USA) Special Edition
Browning A5 Shotgun No. 87 DU 04616 (of 5000)**

This gun has been specially manufactured to commemorate the 50th anniversary of Ducks Unlimited (USA).

As can be seen, the gun is superbly engraved and has high quality woodwork. It is cased in a specially made D.U. gun case.

The gun has been presented to D.U.(NZ) by D.U.(USA) to raise funds for Waterfowl Habitat and will be on view at various centres throughout New Zealand.

Tenders will close on November 30th 1987 and only tenders over \$3,000 will be considered. Evidence of a firearms licence will need to be produced before D.U.(NZ) passes the gun to the successful tenderer.



SHOTGUN TENDER

Post to Secretary, P.O. Box 44-176, Lower Hutt

Name

Address

Amount of tender

Firearms licence number

D.U. NEWS

SUBSTANTIAL CONTRIBUTION FROM THE QEII NATIONAL TRUST

At the July meeting of the Sinclair Wetlands Management Committee, the QEII National Trust — who have equal representation on the committee — announced a further \$25,000 contribution towards work at the Sinclair Wetlands. This brings the total financial input by the National Trust to \$50,000. This is a very substantial contribution which will be applauded by all people keen to preserve and enhance our environment.

D.U. OBTAINS LEASE ON TWO IMPORTANT WETLANDS

Ducks Unlimited has acquired a five year lease on two areas of wetlands. The wetlands are adjacent to the Sinclair Wetlands and comprise areas of 50 hectares and 88 hectares — giving D.U. management responsibilities over a total of 440 hectares (1100 acres) of some of the world's best wetlands.

The management plan which has been written for the Sinclair Wetlands will be extended to cover the two new areas, and the day to day management of the total area will be handled by a Dunedin based D.U. committee. The QEII National Trust will be



represented on this committee by Roger Sutton MBE. The Dept of Conservation and the Otago Acclimatisation Society will also be represented on the committee.

D.U. has a video tape, taken from a helicopter, showing a bird's eye view of the 1100 acres of wetlands. The tape is narrated by Horrie Sinclair and is available to D.U. members, under D.U.'s loan scheme.

MINUTES OF THE 1987 ANNUAL CONFERENCE

These minutes will appear in the December issue of *Flight*.

MEMBERSHIP

New Life Members. We are pleased to announce that Gaylor Donnelly, a former Chairman of D.U. (USA), William D. Wright, Mr & Mrs P.D. Nolan and Glenys Hansen of Eketahuna have recently become D.U. (NZ) Life members.

Membership has been rising at a steady rate, thanks largely to Horrie Sinclair's efforts! Horrie is now only one or two (at the time of writing) away from 200 D.U. members recruited. A magnificent effort. What about you doing your bit for waterfowl and wetlands conservation by enrolling a new member this week? Don't forget that all contributions to D.U. (NZ) are tax deductible.

Renewal subs have been coming in thick and fast, but those who have not yet renewed please do so as soon as possible.

Sponsor members: Robert Sowman, Nick Burrows, Andy Tannock, Miss S. Barnett, Warren Lewis, Alan Martin, Stefan Weston, South Taieri gun club have all recently become Sponsor Members.

Directors survey a newly-excavated display pond opposite the National Wildlife Centre. It is hoped that this DU project which can be clearly seen from the main road will demonstrate how ponds can enhance the landscape.

1987 NATIONAL RAFFLE

Raffle organiser, Mark Newcomb — P.O. Box 1834, Auckland — reports an excellent response from members and hopes are high that we will beat last year's profit of nearly \$5,000.

1988 ANNUAL CONFERENCE

The 1988 Annual Conference will be held at the THC Wairakei on Saturday and Sunday the 16th and 17th of July. For the 1988 conference we hope to organise a field trip, golf tournament, fishing competition and expand on the trade displays. The 4th National Clay Target Championship will be held at the Taupo Gun Club on Friday 15th July. Reserve the dates now.

TWENTIETH INTERNATIONAL ORNITHOLOGICAL CONGRESS

The XX International Ornithological Congress will take place in Christchurch, New Zealand, from 2-9 December 1990. Professor Charles G. Sibley (USA) is President and Dr Ben D. Bell (NZ) is Secretary-General. The anticipated Congress programme will include plenary lectures, symposia, contributed papers (spoken and posters), workshops, discussion groups and films.



There will be a mid-Congress excursion day. Pre- and post-Congress excursions are planned to interesting ornithological sites in New Zealand and adjacent regions. Requests for the First Circular and suggestions regarding Congress organisation should be addressed to:-
Dr Ben D. Bell
Secretary-General,
XX International Ornithological Congress,
Department of Zoology,
Victoria University of Wellington,
Private Bag, Wellington,
New Zealand.

NEW D.U. DIRECTORS

Paul Pirani and Mark Timms stood down as D.U. Directors at the 1987 Annual Conference. Paul was a founder Director of D.U. (NZ) and had been on the Board continually since D.U.'s formation in 1974. His input is certainly one of the main reasons for the success of Ducks Unlimited and his retirement means that at present the Pirani name is absent from the Board. Members will recall that Paul and his wife Cheryl, Ian Pirani, Paul's brother, and Ian's wife Dawn were all on the Board at the same time, and all served in one official capacity or another. Over the years Paul has been the main liaison between D.U. (NZ) and D.U. (USA) and we are pleased that he has agreed to continue working in this area, but he will be sadly missed at Board

DU Directors at their August meeting held at the National Wildlife Centre, Mt Bruce. From left: Allan Elliott, Chris Hoosen, Jim Campbell, Brendan Coe, Ian Bryant, Glenys Hansen, Derek Morrison, Neil Hayes, Ralph Adams, Diane Pritt, Andy Tannock, Jim Glover.

meetings. Mark Timms from Wanganui was on the D.U. Board for five years and performed outstanding work as membership secretary for three years. He too will be sadly missed.

Two prominent D.U. supporters for many years have replaced Paul and Mark, they are Derek Morrison of Otaki and Andy Tannock of Palmerston North. Derek has been Chapter Liaison Director for the past year and Wellington Chapter Chairman for two years. Andy was an acclimatisation society field officer for many years before opening a sports store in Palmerston North. Both new Directors bring a wealth of experience to the Board.

A prominent New Zealander has also been appointed to the Board. Ralph Adams, formerly Director of the NZ Wildlife Service has accepted the position of Honorary Wildlife and Wildlife Habitat Adviser to the D.U. Board of Directors. Ralph has been a key D.U. supporter since D.U.'s inception and his vast knowledge will be invaluable to the D.U. Board.

GERMAN SHORTHAIRED POINTER PUPS



DUNVIC GUARANTEED

My guarantee's are unmatched.

For information contact:
Geoff Sutherland 12 Huka Rd
Birkenhead Ph. 4181819

JOIN DUCKS UNLIMITED (NZ) INC

P.O. BOX 44-176
LOWER HUTT

Life membership	\$550.00
Sponsor membership	\$55.00 year
Full membership	\$16.50 year
Junior membership	\$5.50 year
Trade membership	\$22.00 year

ALL CONTRIBUTIONS ARE
TAX DEDUCTIBLE

Or write for further details

Name

Address

Grey Duck

10 Little Brown Teal Grew to 24
 10 little Brown Teal feeling mighty fine
 Their home lake dried up . . . then there were 9.
 9 little Brown Teal avoid their brother's fate
 A hungry dog met them . . . then there was 8.
 8 little Brown Teal thought they were in heaven
 A hawk made a swoop . . . then there was 7.
 7 little Brown Teal doing diving tricks
 A big mud eel took one . . . then there were 6.
 6 little Brown Teal glad to be alive
 Fire caught them in the grass . . . then there were 5.
 5 little Brown Teal grew a little more
 A Harrier Hawk spotted one . . . then there were 4.
 4 little Brown Teal flying wide and free
 Botulism poisoned one . . . then there were 3.
 3 little Brown Teal arrived at Wellington Zoo
 A Tiger roared at one . . . then there were 2.
 2 little Brown Teal — each a husky drake
 With their mates flew northward, to a D U lake.
 There, killers, drought and fire
 and countless other dangers,
 Are checked by D U members
 And naturalists and rangers.
 2 little Brown Teal, saved from dangers plenty
 With D U's help, fly south again as 2 + 2 + 20.

This is a NZ version of a poem written by Tom Main (a General Manager of D U Inc 1940) as printed in "The Ducks Came Back" by S. Kip Farrington, Jr.



DUCKS UNLIMITED NUMBER PLATE SURROUNDS

Available in red, green, or blue.

\$32.00 a pair: (Includes postage)
 Ducks Unlimited Waterfowl Conservationists.
 and
 Ducks Unlimited Caring for Waterfowl.

AN EKETAHUNA CHAPTER FUNDRAISING PROJECT
 Orders to Mrs G. Hansen, 'Tidsfordriv', R.D.3, Eketahuna

Order form: post to Mrs G. Hansen, 'Tidsfordriv', R.D.3, Eketahuna

Please send me _____ pair(s) of DU Number plate surrounds

Colour _____

Name _____

Address: _____

I enclose my cheque/money order for _____

OPEN DAY AT PEACOCK SPRINGS

Thanks to the generosity of Lady Diana Isaac and the Isaac Wildlife Trust, a public open day will take place at Peacock Springs, Christchurch, on Sunday 4th October. All profits from the open day will go to Ducks Unlimited (NZ).

For Christchurch based D.U. members a visit to Peacock Springs is a *must*. So do come and have a look at one family's efforts for waterfowl and conservation.

A team of D.U. Directors will be there on the 4th and we look forward to seeing you there.

NEW BOOK AVAILABLE

The D.U. Sales section has a new book in stock — in limited quantities. The book is entitled THE MUTE SWAN and D.U. is selling it for \$50 per copy. If you are a member of the ROYAL SWAN project, thinking about joining the project, a waterfowl breeder, or just interested in waterfowl, a copy of this book is essential reading. Besides tracing the history and biology of the mute's the book also covers feeding and management requirements — in captivity and in the wild.

GOOD PUBLICITY FOR D.U. (NZ)

It was good to see an in-depth article on D.U. (NZ) in the August issue of Royal Forest and Bird Protection Society's quarterly journal 'Forest & Bird'. Authoritatively written by D.U. member Ann Graeme of Tauranga, who is also an active Forest & Bird Society member, the article provided an extremely interesting review of how a 'pure' conservationist views the conservation activities of D.U.'s waterfowl hunting members.

Xeroxed copies of the articles are available on request.

D.U. (NZ) TOUR TO CANADA — JUNE 1988

A.D.U. (NZ) members' tour to Canada is currently being planned by D.U. President Jim Campbell. The tour is being arranged to coincide with D.U. Canada's 50th Anniversary celebrations, which takes place in mid June next year.

A three week tour is envisaged, but this is entirely flexible, and the cost is expected to be in the region of \$3,200 per head. Several Directors have indicated that they will be going on the tour and if any members are interested they should contact: Jim Campbell, 'Rameslie', R.D.1, Masterton.

EKETAHUNA CHAPTER FUNCTIONS:

The Chapter is holding its first dinner and auction at the Ambassador Lounge, Masterton on Saturday 19th September, starting at 6.30. The Eketahuna Gun Club will be hosting a simulated field shoot on the following Sunday, 20th.



THE PROBLEM

ARE WETLANDS WASTELANDS?

The general public think they are! Why? Because they don't know anything about them and because they have never seen one first hand.

ARE DUCK HUNTERS CONSERVATIONISTS?

The general public think not! Why? Because they have not had the opportunity to see any of the wetlands we have saved, enhanced or created, or learned about the projects we have initiated to the good of waterfowl and habitat.

THE SOLUTION EDUCATION!

And be assured that nobody else will educate the public. We must do it ourselves. That costs, but D.U. is racing to reverse the trend of public thinking by establishing a facility in Otago where the public, school parties etc. can go to learn about wetlands and what we as sports people and conservationists are doing to save them. Our business "Andy Tannock's Hunting & Fishing Ltd" in Palmerston North has devised a way you can help pay for the Sinclair wetland facilities without it costing you a cent extra. Just make your normal Hunting or Fishing purchases through our shop or by mail order and include the coupon below. We will donate 5% of your purchase to the Sinclair Wetland Building Fund! (In the case of expensive firearms we restrict this donation to \$50.00 per gun as they are already discounted heavily!).

All items including fishing gear are subject to this offer. Just post or bring in the coupon.

GUNS:	S.K.B. s x s new	\$1795.00	Miroku s x s used	\$795.00
	S.K.B. Sporter new	\$1795.00	Bettinsoli 20g O/U new	\$649.00
	S.K.B. Sporter new	\$1195.00	Bettinsoli S Trigger new	\$649.00
	S.K.B. 600 Trap new	\$1995.00	Bettinsoli D. Trigger new	\$599.00
	S.K.B. 500 Skeet new	\$1495.00	Bettinsoli multi choke used	\$750.00
	S.K.B. 1300 Semi Auto	\$1195.00	Russian O/U new	\$599.00
	Beretta 687 Field new	\$1950.00	Remington 1100's used	\$799.00
	Beretta 686 Field new	\$1795.00		
	Beretta 686 Trap new	\$1995.00		
	Winchester 101 field new	\$1550.00		
	Winchester 8 Shot pump	\$539.00		
	Miroku 3000 Field new	\$1550.00		
	Banoli Field semi used	\$995.00		
	Mossberg pump multi choke	\$595.00		
	Mossberg Pump 8 Shot	\$539.00		
	Simpson as new O/U	\$1495.00		

RIFLES SPECIALS

- Sako's. Enquire about new shipment due soon as discounted prices include Left Hand Models.
- Winchester Lever Action 30-30's \$595.00!
- Clayco (Brno Copy) 22s complete with scope & 500 rounds ammo. \$250.00 package deal.

Andy Tannock's Hunting & Fishing

P.O. Box 1202, 554 Main Street,
 Palmerston North. Ph: 86-961

FOR ALL HUNTING AND FISHING REQUIREMENTS

I am a supporter of Ducks Unlimited N.Z. and I wish to have 5% of the total purchase listed below donated to the Sinclair Wetland Fund. (In the case of firearms purchased this donation will be restricted to a maximum of \$50.00). I agree to pay by cash or cheque. (Credit Cards By Arrangement only).

Name _____
 Address: _____
 Phone No. Home: _____ Work: _____

Items: (1) _____ Cost: \$ _____
 (2) _____ \$ _____
 (3) _____ \$ _____
 TOTAL \$ _____

DONATION = _____
 Free Freight _____ Free Freight _____ Free Freight _____

Please Support — We Wish To Look After Your Interests!

PROJECT REPORTS

OPERATION PATEKE

Breeding season results 1986-87. These results were somewhat disappointing, with only 70 brown teal being reared by members — our lowest figure since 1980. However, these results bring the total number reared by members to 900 since the project started in 1976. This is an incredible achievement.

Our low figures for last season were due to a number of factors — two key people leaving the project, too many old pairs of brown teal in captivity and the need for new 'blood' to re-establish a wide gene pool and prevent inbreeding problems.

Successful brown teal breeders were:

Ron Munro	16	
Bill Clinton-Baker	10	
Otorohanga Zoo	10	
Ann Graeme	5	Directors thank
Mary Atkinson	4	and congratulate
Neil Hayes	6	these members
Wellington Zoo	4	for their
MT Bruce	5	dedicated
Jim Campbell	1	enthusiasm
Jim Glover	3	
Murray Dench	4	
Clayton Putt	2	
TOTAL	70	

In respect of obtaining 'new blood' for the project we are pleased to announce that a permit has been received from the Dept of Conservation to remove 5 pairs of brown teal from Great Barrier Island, to supplement and enhance our captive rearing programme. So for the next couple of seasons we will be rejuvenating the captive rearing programme so that we can eventually reach the target of 200 brown teal per season.

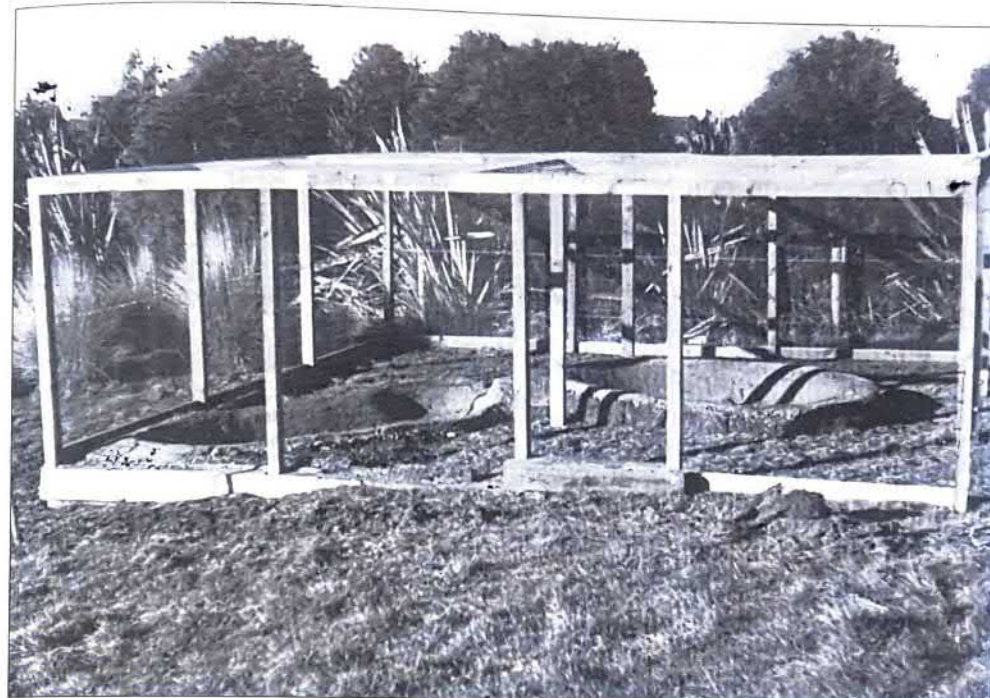
Several new people will be joining the captive rearing programme this year, namely Murray Powell of Hamilton, Glenys Hansen of Eketahuna and David McNeill of Matamata.

Release programme for 1987. In association with the University of Auckland and the Dept. of Conservation, D.U. will be releasing 3 pairs of brown teal on Tiritiri Matangi Island, where considerable waterfowl habitat creation has been taking place. The release will take place later this year.

The bulk of the birds from the 1986-87 breeding season will be released at the Mimiwhangata Farm Park in Northland, and



Brown teal



Ron Munro's blue duck aviary under construction.

if everything goes to plan our brown teal researcher Grant Dumbell will spend some time in Northland following the progress and survival of our birds.

Band recovered. Thanks to D.U. member James Morris of Hikurangi, Northland, we were able to determine the fate of a brown teal released at the Mimiwhangata Farm Park in July 1986. James managed to obtain a brown teal from a duck shooter and he brought the band to the annual meeting at Wairakei. The bird, a male, had been shot near Mataroa, Northland, which is some 10 kilometres inland from Mimiwhangata.

While it is bad news to hear about brown

teal being shot, the value of having a band returned is very considerable as it clearly shows that birds are surviving in Northland and adapting extremely well.

As we have said many times, with continual habitat work in Northland, shooter education, predator control, plus the supplementing of the wild population with our captive reared birds, we see no real problems in maintaining a viable brown teal population in Northland.

OPERATION WHIO

As a result of the recent announcement by the Dept of Conservation, that several pairs of blue ducks would be made available to D.U. members, at least three good keen men have been working on new aviaries specially for blue ducks. Melvin Pike of Carterton

was the first member to complete an aviary to DOC's requirements and he now has a pair of blue ducks enjoying their new facilities. Ron Munro of Invercargill and winner of our Brown Teal Breeder of the Year Award has been working overtime on a new blue duck aviary and had the whole aviary completed in just over two weeks. A great achievement by both members. Peter McKenzie, director of the Nga Manu bird sanctuary near Waikanae will also be starting a breeding programme.

Blue duck requirements are very similar (we think) to the requirements for a pair of captive brown teal; in as much as each pair have their own enclosure, a good sized pond is needed and plenty of ground cover is needed. A slightly larger aviary is needed, however, and should be somewhere around 7 metres square — minimum.



MOLT

Quality Game and
Bird Calls since 1904



No. 66 DUCK CALL

A beautifully built duck call in American Walnut with a moisture resistant polyurethane finish. Red cedar tonal parts. Great tone and volume. Responsive for high birds and comeback calls. Very easy to chatter.

A range of calls to cover every occasion

Marketed in New Zealand by **KILWELL SPORTS**, Private Bag, Rotorua



New from DU Sales Dept

Baseball-style cap suitable for all outdoor activities.

Available in Hunter Green with 5-colour mallard logo.

One size fits all.

\$22.00 from DU Sales Dept.
See back page for ordering details.

DUCKS UNLIMITED (NZ) INC

INCOME AND EXPENDITURE ACCOUNT FOR THE YEAR ENDED 31 MARCH 1987

	1987	1986
	\$	\$
INCOME		
Subscriptions: Life	1,680	2,026
Full	10,075	7,769
Supporter	100	291
Junior	194	195
Trade	1,491	570
Sponsor	1,152	900
TOTAL SUBSCRIPTIONS	14,692	11,751
PLUS OTHER INCOME		
Advertising Income "Flight"	2,262	1,800
Donations	24,408	27,862
Conference Income	28,008	40,772
Profit on Book Sales	81	577
Profit on Other Sales	217	856
Sundry	924	1,304
Grant: Internal Affairs	—	425
Ministry of Recreation and Sport	—	500
Interest	5,083	2,092
Raffle	6,328	—
TOTAL INCOME	82,003	87,939

LESS EXPENDITURE

Audit and Accountancy Fees	750	500
Advertising	94	393
Duplicating and Printing	709	940
Operation: "Gretel"	379	200
"Pakete"	3,815	5,148
"Branta"	30	635
"Whio"	151	250
"Mute Swan"	(150)	—
"Wetlands"	8,638	22,409
"Sinclair Wetlands"	9,909	—
Postage	1,147	655
Printing	9,681	7,632
Sundry	494	2,715
Travelling Expenses — Board Meetings	10,559	1,906
A.G.M. Expenses	12,247	22,917
Tolls	1,072	465
TOTAL EXPENSES	59,525	66,765
EXCESS INCOME OVER EXPENDITURE	22,478	21,174

STATEMENT OF ASSETS AND LIABILITIES AS AT 31 MARCH 1987

	1987	1986
	\$	\$
ASSETS		
Sinclair Wetlands	73,000	73,000
Investment Account (Note 2)	6,700	6,700
Term Deposit	19,633	18,295
Bank	3,490	9,227
Sundry Debtors	26,654	549
Stock — Books	1,300	1,523
Other	4,358	3,457
Machinery	52	52
	135,187	112,803
LIABILITIES		
Sundry Creditors	1,965	2,059
Revaluation Reserve	73,000	73,000
ACCUMULATED FUNDS		
Balance 1 April	37,744	16,570
Plus Excess Income Over Expenditure	22,478	21,174
Balance 31 March 1987	60,222	37,744
	135,187	112,803

NOTES TO THE FINANCIAL STATEMENTS FOR THE YEAR ENDED 31 MARCH 1987

1. STATEMENT OF ACCOUNTING POLICIES

The general accounting policies recognised as appropriate in the preparation of these financial statements are:

The measurement base adopted is that of historical cost, as modified by the revaluation of certain assets.

Reliance has been placed on the assumption that the Society is a going concern.

The following are the particular accounting policies which have a material effect on the measurement of results and financial position and are unchanged from last year.

Income is recognised as earned.

Stock has been valued at the lower of cost or net realisable value on a FIFO basis.

Stock purchased for Operations is expensed when purchased.

The results and financial position of the Hamilton Chapter are not reflected in these accounts.

2. The Investment Account represents funds passed to the Society by the Hamilton Chapter. Interest on those funds is paid to the Chapter.

Obviously the project is a very long term one, but we see no reason why it should not develop along similar lines to operation Pateke, which now has well over 30 pairs of brown teal being held by members.

D.U. thanks and applauds the support from the Dept of Conservation in getting the project off the ground.

OPERATION GRETEL

Jack Worth, Horrie Sinclair, Bill Clinton-Baker and Melvin Pike have all reported grey teal boxes full of eggs in mid July. Horrie even reported that one clutch had hatched and gone by mid July. So there is little wonder that the grey teal population is rising at an impressive rate.

Around 70 new boxes have been erected since last season — 50 in the Waikato and 20 in the Wairarapa.

OPERATION ROYAL SWAN

All mute swans from this year's transfer from Peacock Springs have now been distributed, the last spare bird being sent to Jack Parris of Motueka — to re-establish a pair. This bird was flown courtesy of Skyferry, of Wellington, a company keen to assist our mute swan recovery programme. This transfer was recorded in detail by the Dominion newspaper.

OPERATION BRANTA

Any member keen to establish a flock of Canada geese should let the D.U. secretary know as soon as possible.

OPERATION WETLANDS

Home Lagoon, our major project in the

Wairarapa, is full of water and the bulk of the water has come through our pipe from the Ruamahanga River. We hope to have an aerial photo to show you in the December Flight.

Directors viewed the area in late June, to see many black swans and numerous ducks using the lagoon.



New from DU Sales Dept

Baseball-style cap suitable for all outdoor activities. Available in Hunter Green with 5-colour mallard logo. One size fits all. \$22.00 from DU Sales Dept. See back page for ordering details.

D.U SALES DEPT

ORDER FORM
PLEASE ALLOW APPROX. 3 WEEKS FOR DELIVERY
TO: DUCKS UNLIMITED (N.Z.) INC., DATE.....
C/O MS D. PRITT, SMITHS ROAD,
OHAKUNE

PLEASE POST ME THE FOLLOWING (All prices include postage and GST)

A Coloured Key To The Waterfowl of the World	\$11.00
Ducks, Ponds & People	\$11.00
Wildfowl Management on Inland Waters	\$15.40
The Duckshooters Bag	\$7.70
DU Badge(s)	\$5.50
Ducks Unlimited (N.Z.) Decals	\$1.10
The Hawaiian Goose	\$24.75
Gamebird Hunting	\$7.70
DU Tie	\$13.75
Managing Wetlands	\$23.65
DU Shirt	\$41.80
Brown Teal Booklet	\$10.10
Bic Pens	6.60/Box
New Zealand Birds	\$11.00
VHS Video 'River In Question'	\$64.90
DU Caps (one size fits all)	\$22.00

I ENCLOSE MY CHEQUE FOR \$.....IN PAYMENT
OR
PLEASE CHARGE TO MY VISA/BANKCARD/AMEX/DINERS
(Delete to suit)

CARD NO.....EXPIRY DATE.....

NAME (Please print).....

ADDRESS.....

BUSINESS HOUSES: TAX INVOICE REQUIRED (Tick)

JOIN

DUCKS UNLIMITED (NZ) INC

P.O. BOX 44-176
LOWER HUTT

Life membership	\$550.00
Sponsor membership	\$55.00 year
Full membership	\$16.50 year
Junior membership	\$5.50 year
Trade membership	\$22.00 year

ALL CONTRIBUTIONS ARE
TAX DEDUCTIBLE

Or write for further details

Name

Address

DUCKS UNLIMITED (NZ) INC

INCOME AND EXPENDITURE ACCOUNT FOR THE YEAR ENDED 31 MARCH 1987

	1987	1986
	\$	\$
INCOME		
Subscriptions: Life	1,680	2,026
Full	10,075	7,769
Supporter	100	291
Junior	194	195
Trade	1,491	570
Sponsor	1,152	900
TOTAL SUBSCRIPTIONS	14,692	11,751
PLUS OTHER INCOME		
Advertising Income "Flight"	2,262	1,800
Donations	24,408	27,862
Conference Income	28,008	40,772
Profit on Book Sales	81	577
Profit on Other Sales	217	856
Sundry	924	1,304
Grant: Internal Affairs	—	425
Ministry of Recreation and Sport	—	500
Interest	5,083	2,092
Raffle	6,328	—
TOTAL INCOME	82,003	87,939

LESS EXPENDITURE

Audit and Accountancy Fees	750	500
Advertising	94	393
Duplicating and Printing	709	940
Operation: "Gretel"	379	200
"Pakete"	3,815	5,148
"Branta"	30	635
"Whio"	151	250
"Mute Swan"	(150)	—
"Wetlands"	8,638	22,409
"Sinclair Wetlands"	9,909	—
Postage	1,147	655
Printing	9,681	7,632
Sundry	494	2,715
Travelling Expenses — Board Meetings	10,559	1,906
A.G.M. Expenses	12,247	22,917
Tolls	1,072	465
TOTAL EXPENSES	59,525	66,765
EXCESS INCOME OVER EXPENDITURE	22,478	21,174

STATEMENT OF ASSETS AND LIABILITIES AS AT 31 MARCH 1987

	1987	1986
	\$	\$
ASSETS		
Sinclair Wetlands	73,000	73,000
Investment Account (Note 2)	6,700	6,700
Term Deposit	19,633	18,295
Bank	3,490	9,227
Sundry Debtors	26,654	549
Stock — Books	1,300	1,523
Other	4,358	3,457
Machinery	52	52
	135,187	112,803
LIABILITIES		
Sundry Creditors	1,965	2,059
Revaluation Reserve	73,000	73,000
ACCUMULATED FUNDS		
Balance 1 April	37,744	16,570
Plus Excess Income Over Expenditure	22,478	21,174
Balance 31 March 1987	60,222	37,744
	135,187	112,803

NOTES TO THE FINANCIAL STATEMENTS FOR THE YEAR ENDED 31 MARCH 1987

1. STATEMENT OF ACCOUNTING POLICIES

The general accounting policies recognised as appropriate in the preparation of these financial statements are:

The measurement base adopted is that of historical cost, as modified by the revaluation of certain assets.

Reliance has been placed on the assumption that the Society is a going concern.

The following are the particular accounting policies which have a material effect on the measurement of results and financial position and are unchanged from last year.

Income is recognised as earned.

Stock has been valued at the lower of cost or net realisable value on a FIFO basis.

Stock purchased for Operations is expensed when purchased.

The results and financial position of the Hamilton Chapter are not reflected in these accounts.

2. The Investment Account represents funds passed to the Society by the Hamilton Chapter. Interest on those funds is paid to the Chapter.

Obviously the project is a very long term one, but we see no reason why it should not develop along similar lines to operation Pateke, which now has well over 30 pairs of brown teal being held by members.

D.U. thanks and applauds the support from the Dept of Conservation in getting the project off the ground.

OPERATION GRETEL

Jack Worth, Horrie Sinclair, Bill Clinton-Baker and Melvin Pike have all reported grey teal boxes full of eggs in mid July. Horrie even reported that one clutch had hatched and gone by mid July. So there is little wonder that the grey teal population is rising at an impressive rate.

Around 70 new boxes have been erected since last season — 50 in the Waikato and 20 in the Wairarapa.

OPERATION ROYAL SWAN

All mute swans from this year's transfer from Peacock Springs have now been distributed, the last spare bird being sent to Jack Parris of Motueka — to re-establish a pair. This bird was flown courtesy of Skyferry, of Wellington, a company keen to assist our mute swan recovery programme. This transfer was recorded in detail by the Dominion newspaper.

OPERATION BRANTA

Any member keen to establish a flock of Canada geese should let the D.U. secretary know as soon as possible.

OPERATION WETLANDS

Home Lagoon, our major project in the

Wairarapa, is full of water and the bulk of the water has come through our pipe from the Ruamahanga River. We hope to have an aerial photo to show you in the December Flight.

Directors viewed the area in late June, to see many black swans and numerous ducks using the lagoon.



New from DU Sales Dept

Baseball-style cap suitable for all outdoor activities. Available in Hunter Green with 5-colour mallard logo. One size fits all. \$22.00 from DU Sales Dept. See back page for ordering details.

D.U SALES DEPT

ORDER FORM
PLEASE ALLOW APPROX. 3 WEEKS FOR DELIVERY
TO: DUCKS UNLIMITED (N.Z.) INC., DATE.....
C/O MS D. PRITT, SMITHS ROAD,
OHAKUNE
PLEASE POST ME THE FOLLOWING (All prices include postage and GST)

A Coloured Key To The Waterfowl of the World	\$11.00
Ducks, Ponds & People	\$11.00
Wildfowl Management on Inland Waters	\$15.40
The Duckshooters Bag	\$7.70
DU Badge(s)	\$5.50
Ducks Unlimited (N.Z.) Decals	\$1.10
The Hawaiian Goose	\$24.75
Gamebird Hunting	\$7.70
DU Tie	\$13.75
Managing Wetlands	\$23.65
DU Shirt	\$41.80
Brown Teal Booklet	\$10.10
Bic Pens	6.60/Box
New Zealand Birds	\$11.00
VHS Video 'River in Question'	\$64.90
DU Caps (one size fits all)	\$22.00

I ENCLOSE MY CHEQUE FOR \$.....IN PAYMENT OR

PLEASE CHARGE TO MY VISA/BANKCARD/AMEX/DINERS (Delete to suit)

CARD NO.....EXPIRY DATE.....

NAME (Please print).....

ADDRESS.....

BUSINESS HOUSES: TAX INVOICE REQUIRED (Tick)

JOIN

DUCKS UNLIMITED (NZ) INC

P.O. BOX 44-176
LOWER HUTT

Life membership	\$550.00
Sponsor membership	\$55.00 year
Full membership	\$16.50 year
Junior membership	\$5.50 year
Trade membership	\$22.00 year

ALL CONTRIBUTIONS ARE TAX DEDUCTIBLE

Or write for further details

Name

Address